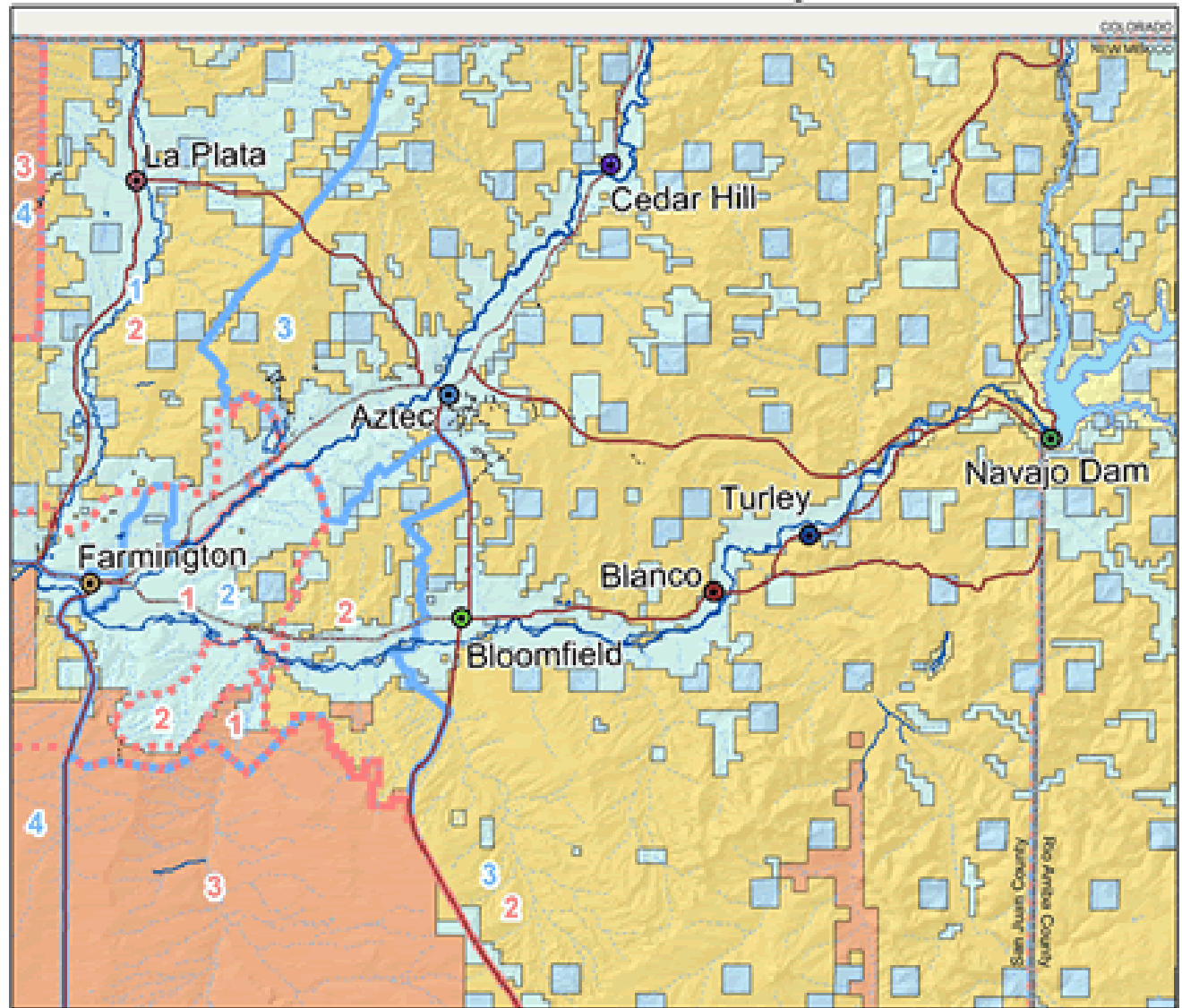
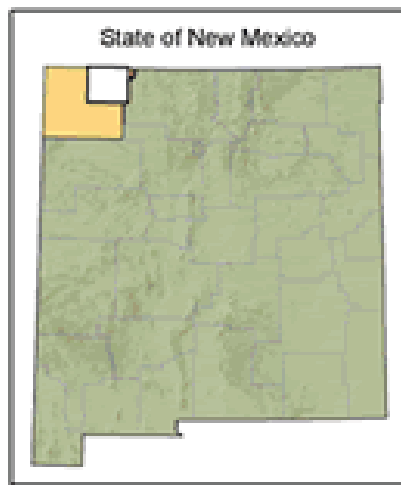


~San Juan County~



Legend

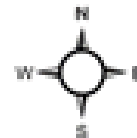
- US Highway
- State Highway
- 4WD Road, Vehicular Trail
- Main Waterways
- Drainages
- County Boundary

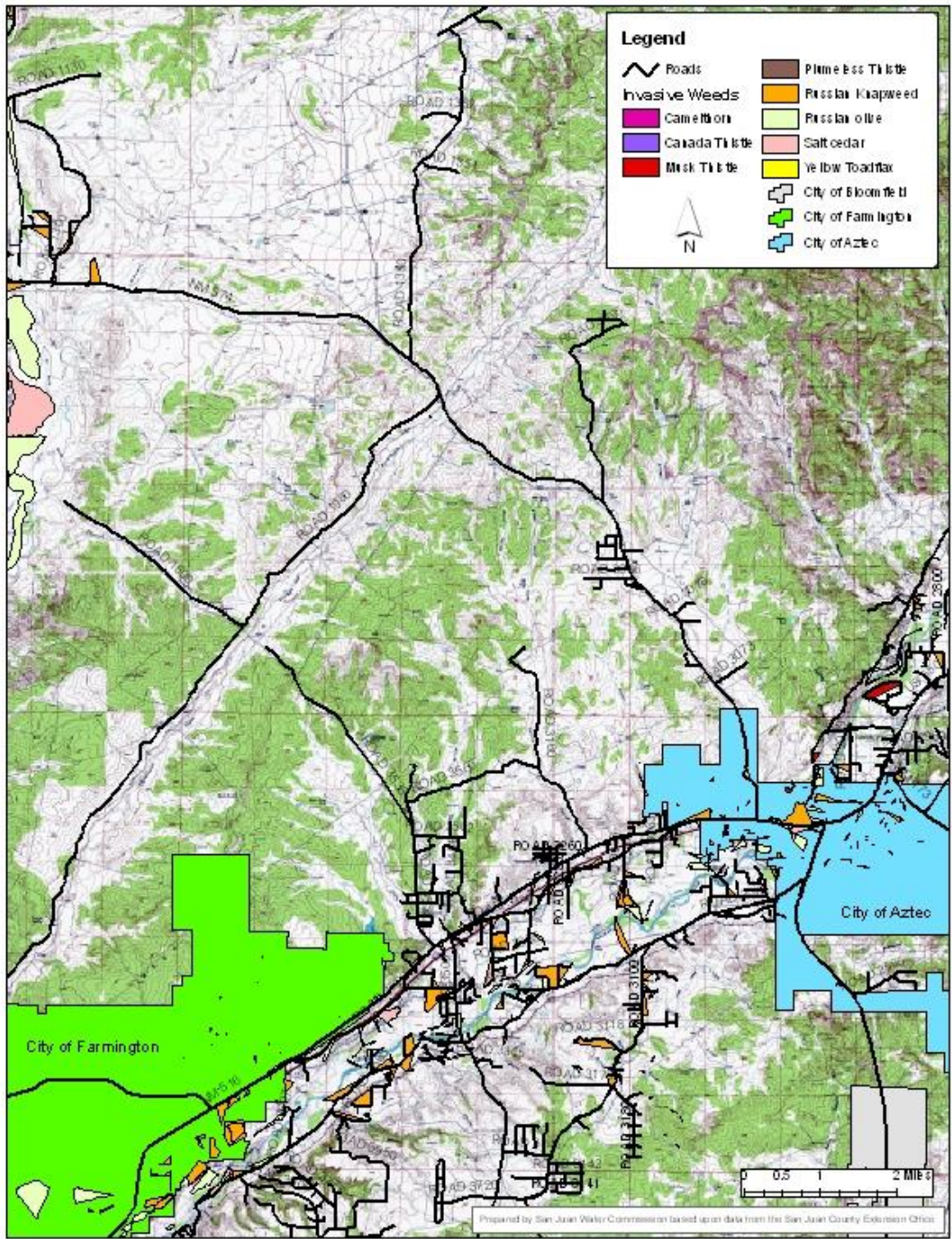
Land Ownership

- Bureau of Land Management
- Bureau of Reclamation
- Navajo Indian Reservation
- Private (Patented) Land
- State of New Mexico

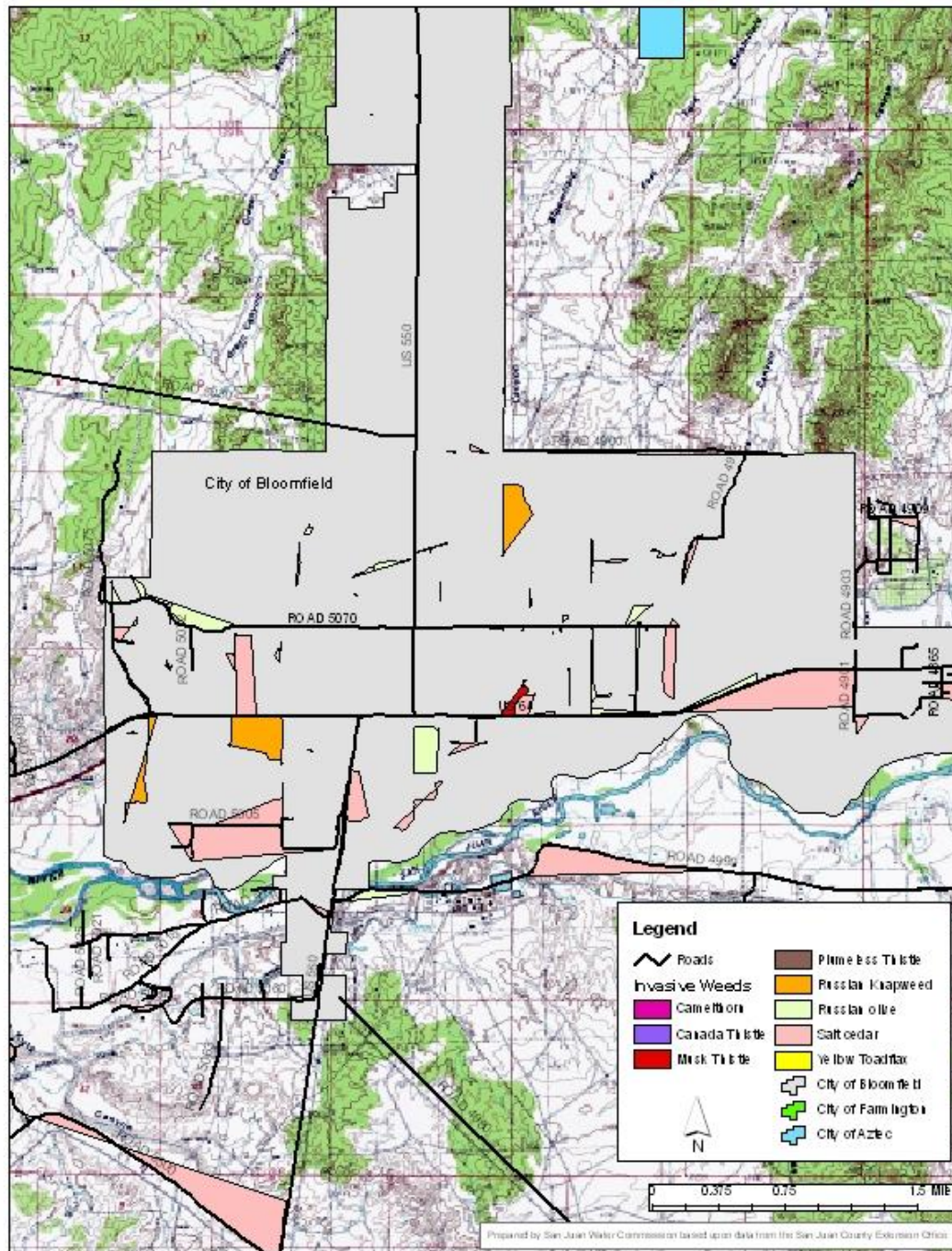
Districts (number)

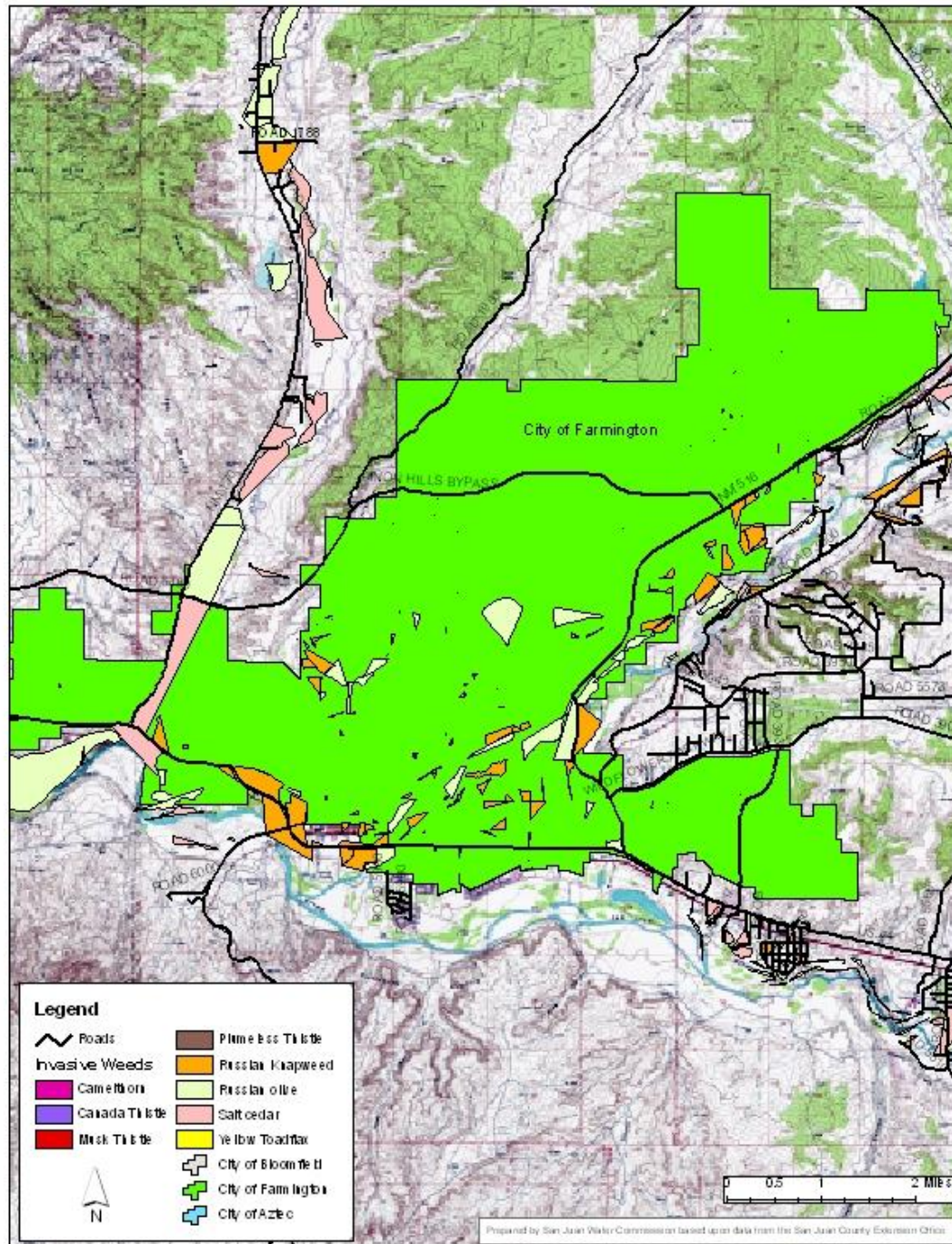
- | | | | | | |
|---------------|--|--------------------|--------------------|---------------------|----------------|
| SENATE | | William Sharer (1) | Steven Neville (2) | John Pinto (3) | |
| HOUSE | | Thomas Taylor (1) | Richard Cheney (2) | Sandra Townsend (3) | Ray Begaye (4) |





Prepared by San Juan Water Commission based upon data from the San Juan County Extension Office.

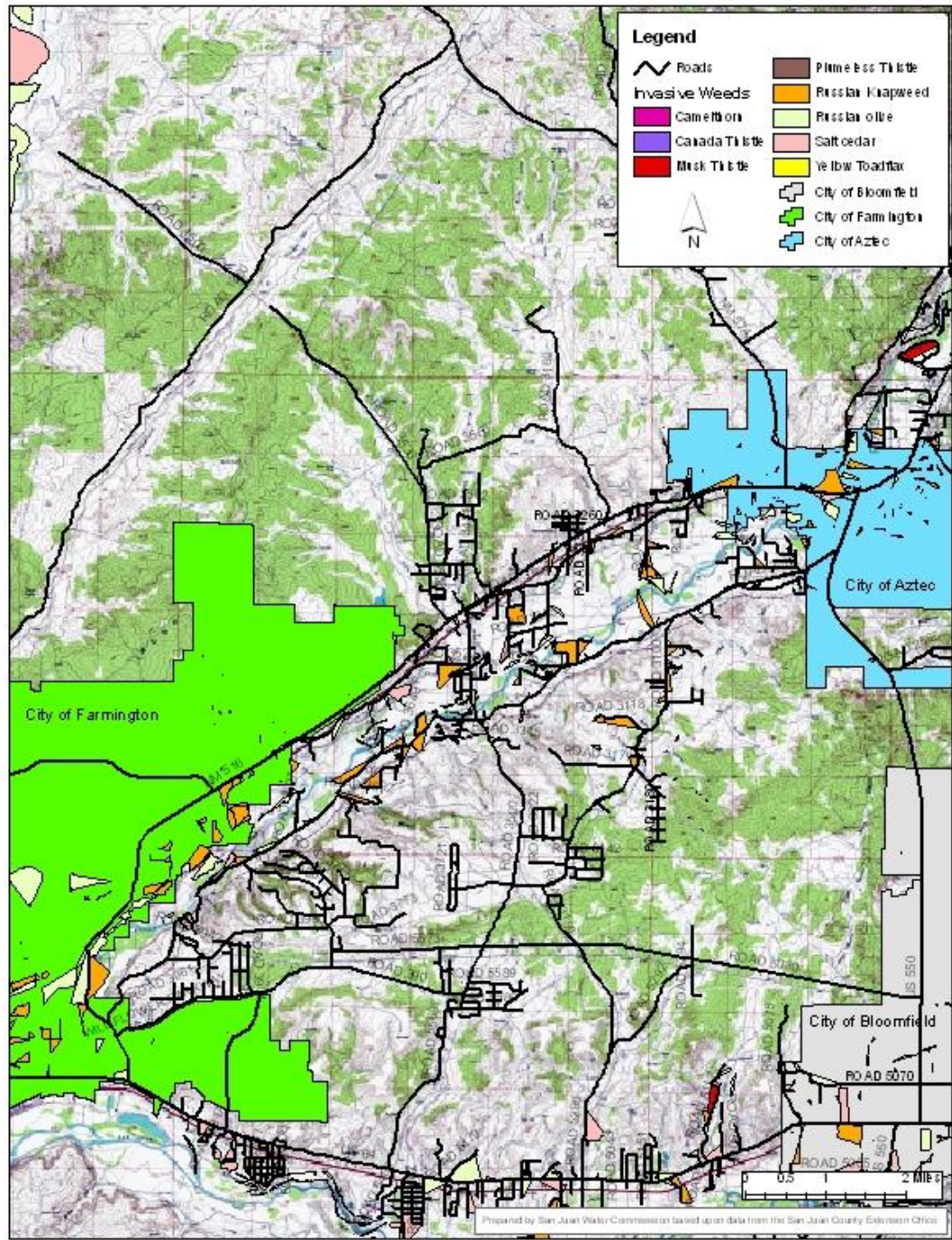




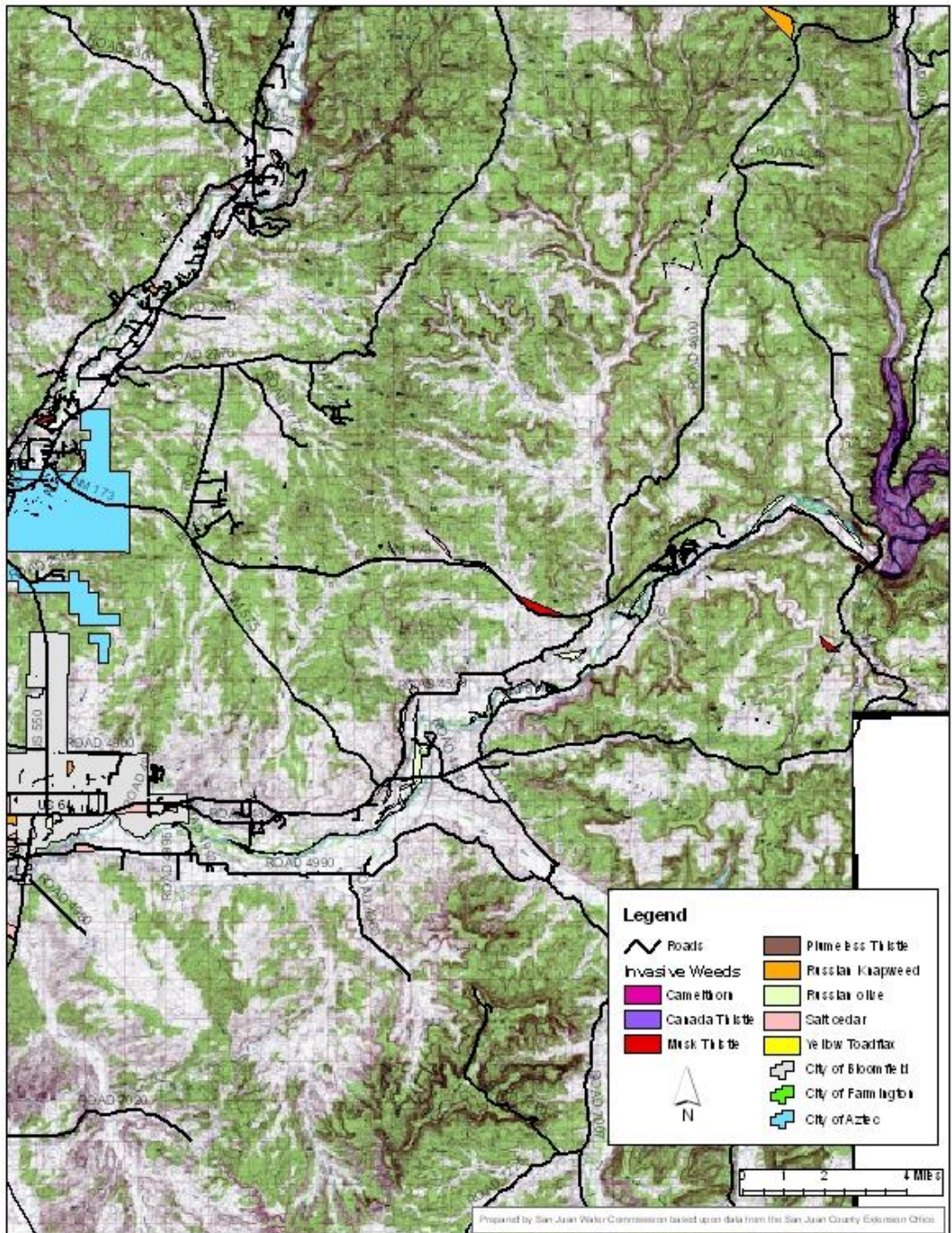
Legend

- | | |
|--|--|
|  Roads |  Prime So. Thistle |
| Invasive Weeds |  Russian Knapweed |
|  Canada Thistle |  Russian Olive |
|  Musk Thistle |  Salt Cedar |
| |  Yellow Toadflax |
|  City of Bloomfield |  City of Farmington |
| |  City of Aztec |

Prepared by San Juan Water Commission based upon data from the San Juan County Extension Office.



Prepared by San Juan Water Commission based upon data from the San Juan County Extension Office



Prepared by San Juan Water Commission on based upon data from the San Juan County Extension Office.